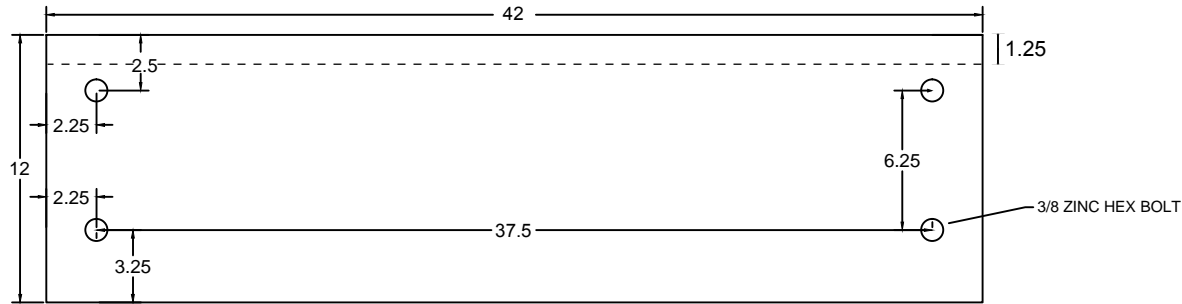


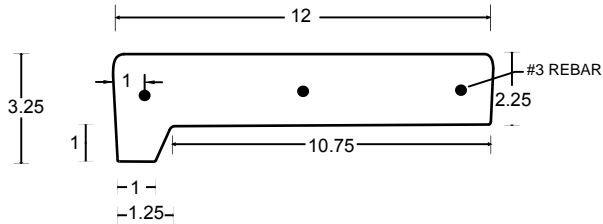


www.coastprecast.com  
 Phone: 936.890.5500  
 Toll Free: 877.708.7323  
 Fax: 936.890.5501  
 sales@coastprecast.com

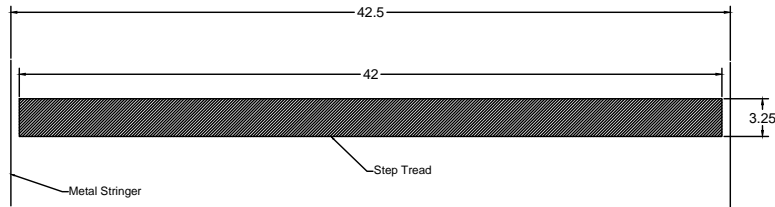
### Bottom View



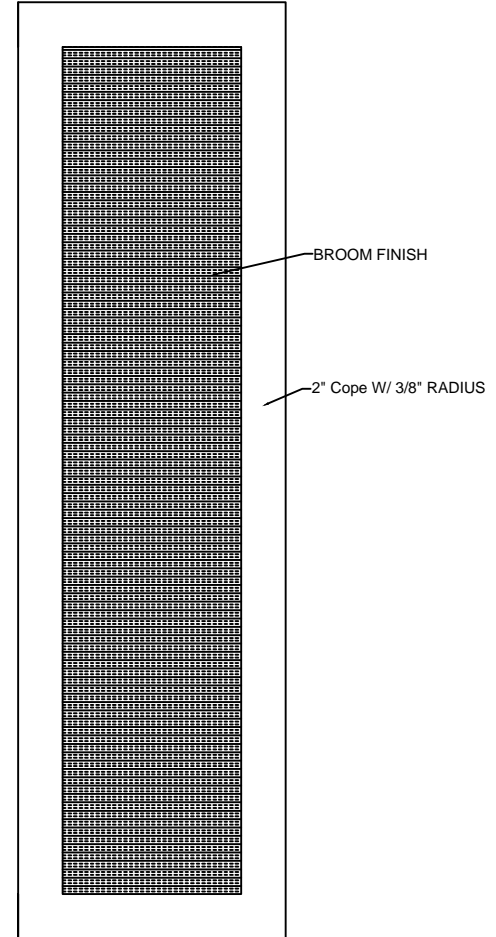
### Cross Section



### STRINGER



### Top View



- NOTES:**
1. STAIR TREAD SURFACE MEETS OR EXCEEDS OSHA & ADA RECOMMENDATIONS
  2. CONCRETE 5,000 LBS PSI 28 DAYS
  3. LIVE LOAD 100 LBS PER SQ FOOT
  4. FLEXURAL STRENGTH: 2500-3000 PSI
  5. ABSORPTION 3%-4%
  6. REINFORCING BARS: ASTM A615, GRADE 60

APPROVED BY: \_\_\_\_\_ DATE: \_\_\_\_\_

PRINT NAME: \_\_\_\_\_