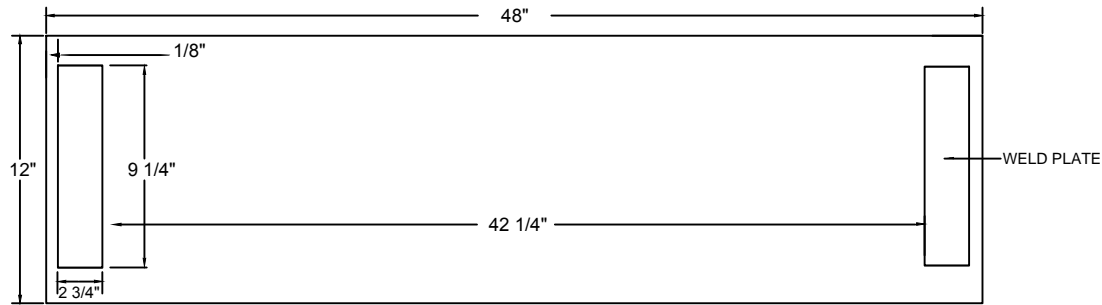


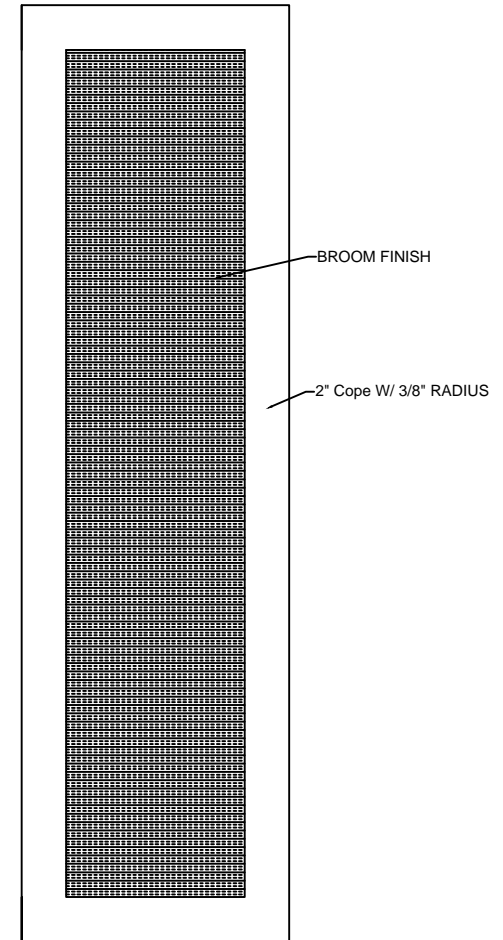


www.coastprecast.com
 Phone: 936.890.5500
 Toll Free: 877.708.7323
 Fax: 936.890.5501
 sales@coastprecast.com

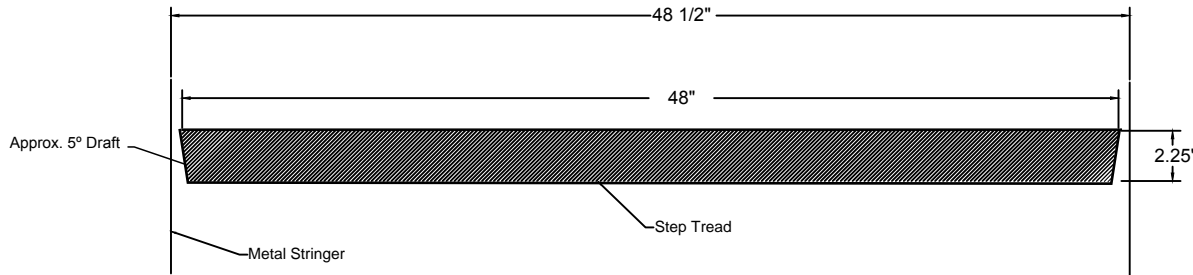
Bottom View



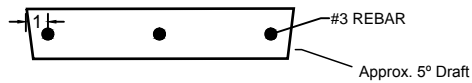
Top View



Stringer View



Cross Section



- NOTES:
1. STAIR TREAD SURFACE MEETS OR EXCEEDS OSHA & ADA RECOMMENDATIONS
 2. CONCRETE 5,000 LBS PSI 28 DAYS
 3. LIVE LOAD 100 LBS PER SQ FOOT
 4. FLEXURAL STRENGTH: 2500-3000 PSI
 5. ABSORPTION 3%-4%
 6. REINFORCING BARS: ASTM A615, GRADE 60

APPROVED BY: _____

DATE: _____

PRINT NAME: _____